

CB
650R

NEO SPORTS CAFÉ



ACCESSORIES

CB650R



UPDATED

DID YOU KNOW?

Where are these beautiful curves coming from?

One of the most distinctive attributes of the CB650R is its swooping four-into-one exhaust system. This beautiful design is a tribute to another iconic Honda: the CB400F also known as the CB 400 Four. Produced between 1975 and 1977, the CB 400 Four caused quite a stir thanks to its café racer look. Delivering only 37 bhp (28 kW) at 8,500 rpm and 24 lb-ft (33 N-m) at 7,500 rpm, its four-in-line engine was not meant to take the racetracks by storm. Yet, back in the late 70's, some versions upgraded to 492cc were capable of 13,500 rpm and producing an estimated 60 bhp (45 kW).

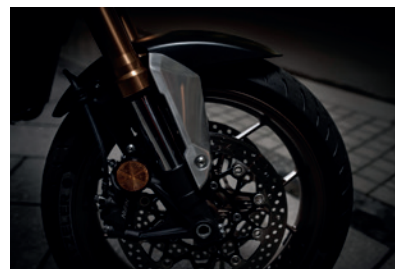


CONTACTEAZĂ UN DEALER



METER VISOR KIT
08R70-MKN-D50

The meter visor is fitted with a high-quality aluminium panel to further enhance the iconic look of the CB650R. Stays are sold separately (see 08R74-MKN-D50).



FRONT FENDER PANELS
08F73-MKN-D50

Pair of high-quality aluminium panels designed to fit the front fender and give your motorcycle the ultimate Neo Sport Cafe look.



SHROUD COVERS
08F74-MKN-D50

Pair of high-quality aluminium shroud covers beautifully engraved with the CB650R logo.



SIDE COVERS
08F75-MKN-D50

High quality aluminium left and right panels that will cover the side of the bike.

PERFORMANCE & DESIGN



UNDER COWL
08F71-MKN-D50ZA

Under cowl kit to improve the appearance of the bike. All parts to fit directly to the frame are included. Available in Mat Gun Powder Black Metallic.



REAR SEAT COWL 08F72-MKN-D50ZB

This seat cowl includes a pad to improve the comfort. Available in Mat Gun Powder Black Metallic, this accessory is compliant with any colour available in 2021 for CB650R. For a total Neo Sport Cafe look, this accessory can be completed by an aluminium plate (sold separately).

SEAT COWL PLATE 08F76-MKN-D50

Aluminium insert to enhance the design of the Rear Seat Cowl.



WHEEL STRIPES

08F84-MFJ-810A, 20A, 30A, 40A or 50A

Set of 3 round-shaped strips for easy application and a perfect fit on two 17-inch wheels. Honda Racing stickers included.

5 colours available:

- Pearl Sunbeam White (10A)
- Italian Red (20A)
- Candy Tahitian Blue (30A)
- Dragon Green Metallic (40A)
- Digital Silver Metallic (50A)



QUICK SHIFTER KIT

08U72-MKN-D50

By measuring the intensity of the shifting input, the quick shifter enables the rider to change gear without the need to operate the clutch lever or shut the throttle. The system aids upshifting, maximizing the riding experience.



CONTACTEAZĂ UN DEALER



GRIP HEATERS 08ESY-MKN-HG19

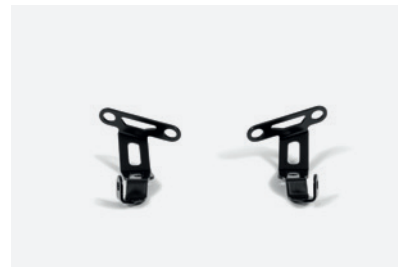
Extremely slim heated grips which provide 360° heat around the grips. Features integrated control for maximum rider comfort and design integration. Features 3-step variable heating levels, integrated circuit to protect the battery from draining and smart heat allocation that focuses on the area of the hands most sensitive to cold.

Attachment and Honda High-Temperature special cement included.



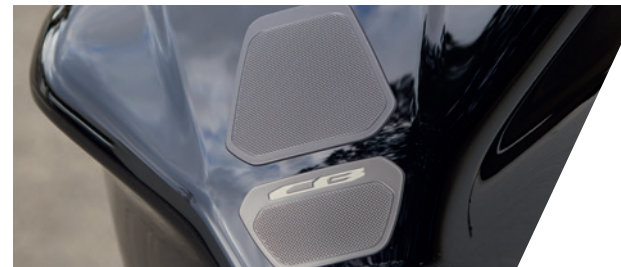
FRONT VISOR (SMOKE) 08R71-MKN-D50

Fitted to the meter panel, this small and stylish wind deflector protects the chest from wind blasts at higher speeds. Stays are sold separately (08R74-MKN-D50).



VISOR STAY KIT 08R74-MKN-D50

Pair of left and right stays required to install either the front visor or the meter visor (sold separately).



TANK PAD (CB LOGO) 08P71-MKN-D50

Tank pad featuring the CB logo. The tank pad helps to protect the tank paintwork from scratches.

COMFORT ▲

LUGGAGE ▼

PROTECTION



TANK BAG SET 08ESY-MKJ-TKB18

A simple and functional tank bag adapted to the tank of the unit. Thanks to the specific attachment included, the stable mounting of the tank bag does not disturb the handling of this machine. A clear pocket on the top of the bag makes it possible for easy smart phone storage.

Bag capacity: 3L

Rain cover included.

Dimensions (W x L x H): 178 x 285 x 130



REAR SEAT BAG SET 08ESY-MKJ-STB18

A simple and functional rear bag specifically adapted to the tapered shape of the rear seat. Easy attachment and stable mounting thanks to the specific attachment included. Bag capacity: 15L expandable to 22L

Rain cover included.

Dimensions in mm (W x L x H): 355 x 365 x 243



CONTACTEAZĂ UN DEALER





CB
650R

NEO SPORTS CAFÉ

ACCESSORIES PACKS

	NEO SPORT CAFÉ	SPORT	COMFORT	TRAVEL
CONTENT	08HME-MKN-NSC19	08HME-MKN-SP19	08HME-MKY-COM21	08ESY-MKJ-BAG18
Meter Visors with stays	•			
Front Fender Panels	•			
Shroud Covers	•			
Side Covers Panels	•			
Under Cowl		•		
Rear Seat Cowl with Aluminium plate (*)		•		
Quick Shifter		•	•	
Front Visor with stays			•	
Grip Heaters			•	
CB Design Tank Pad		•	•	
Tank Bag with attachment				•
Rear Seat Bag with attachment				•

CONTACTEAZĂ UN DEALER

(*) The rear seat cowl is compatible with all 21YM colours versions:
• Mat Gunpowder Black Metallic
• Pearl Smoky Gray
• Candy Chromosphere Red